

# Total Ballots Returned

(as of October 14, 2020)

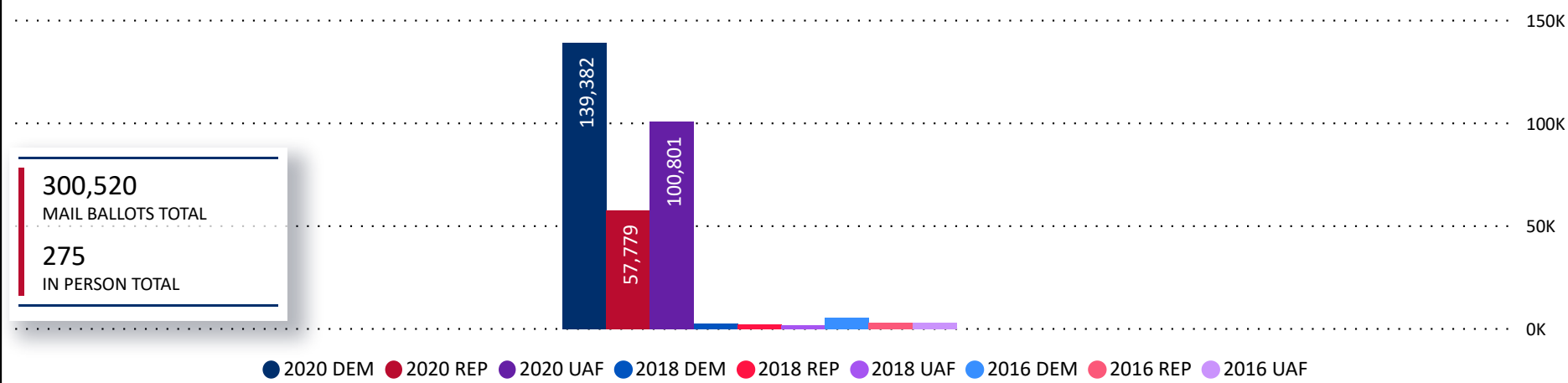
## 300,795

**October 15, 2020**

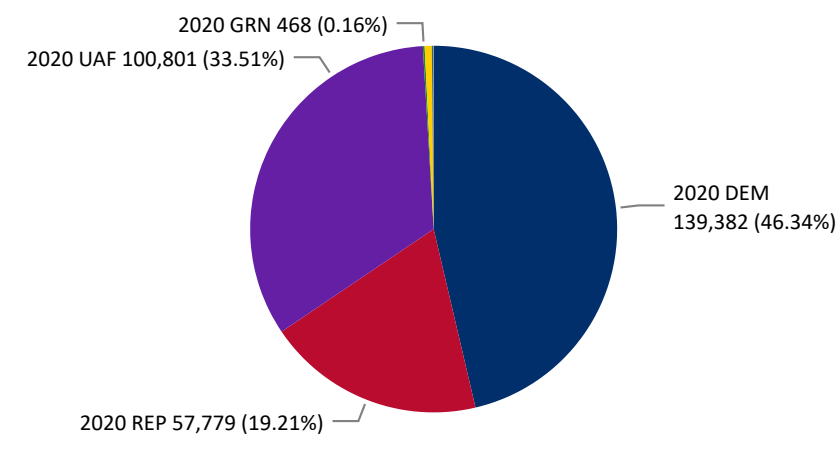
20 Days Out from Election Day

**2020 General Election** Ballot Return Reporting

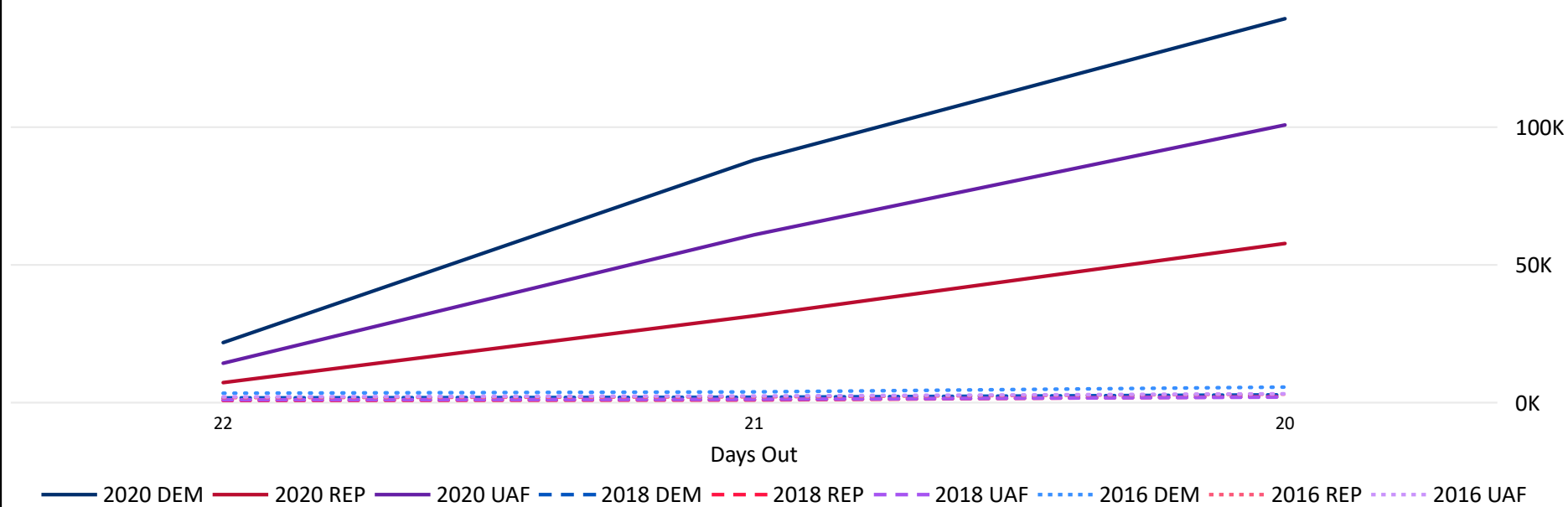
Ballots Returned 20 Days Out by Major Party Registration



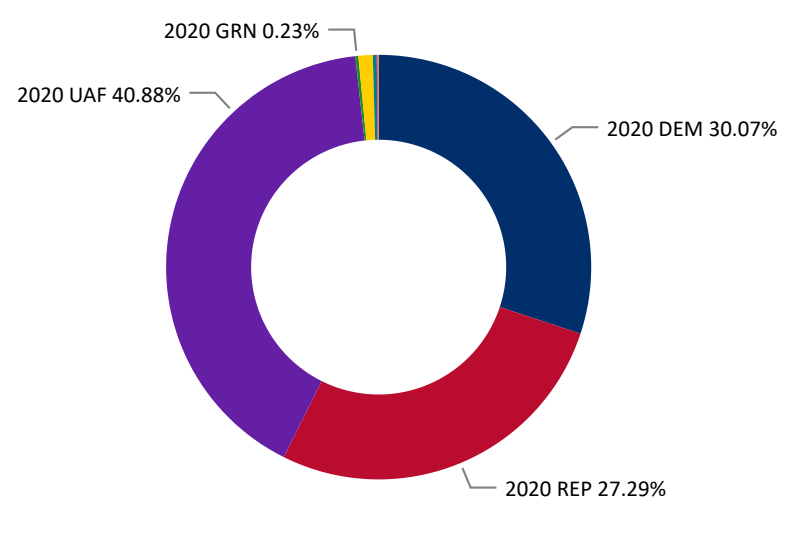
Ballots Returned by Party Registration



Trend Line of Ballots Returned by Day 2016, 2018 & 2020 by Major Party Registration



Percent of Total Active Voters by Party Registration



# Total Ballots Returned

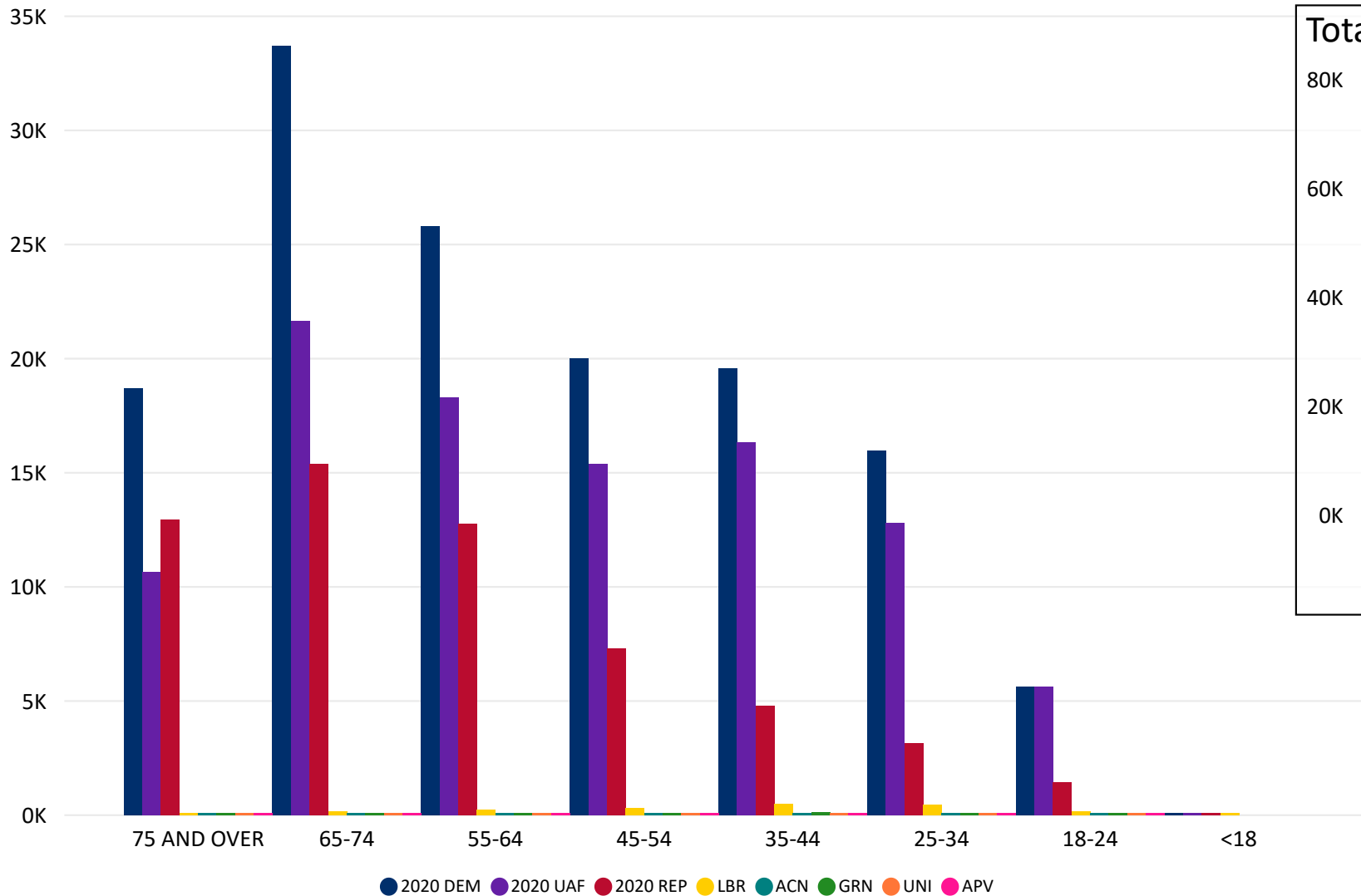
(as of October 14, 2020)

**300,795**

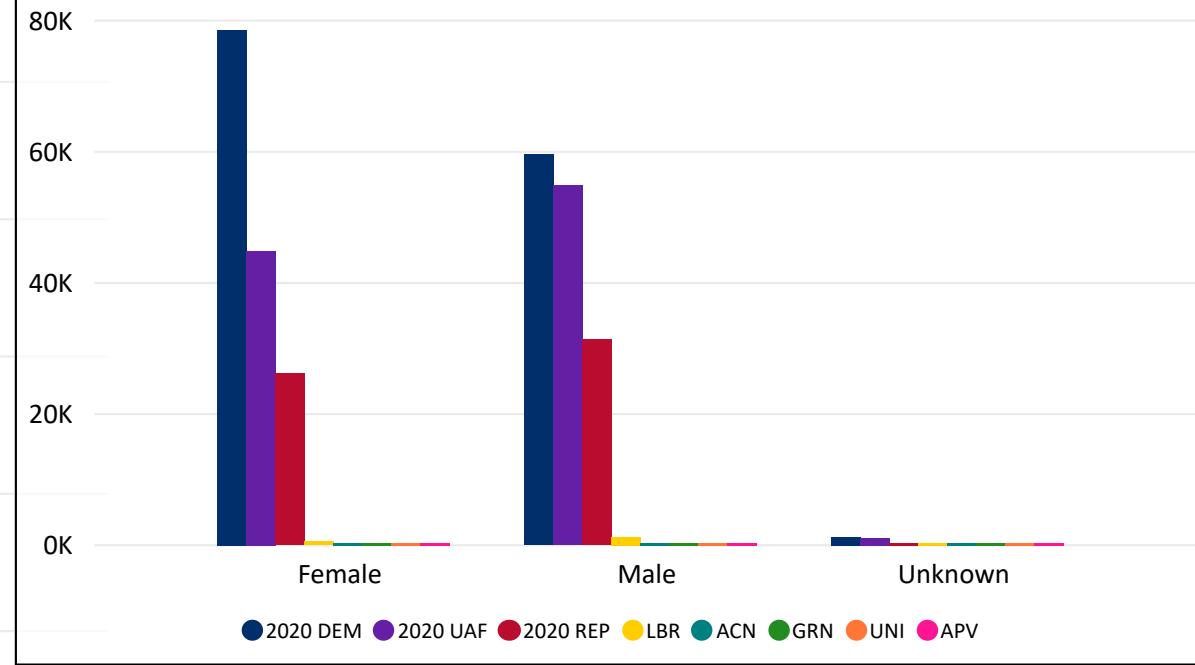
**October 15, 2020**

20 Days Out from Election Day

Ballot Type Returned by Age Range



Total Ballots Returned by Gender



# Total Ballots Returned

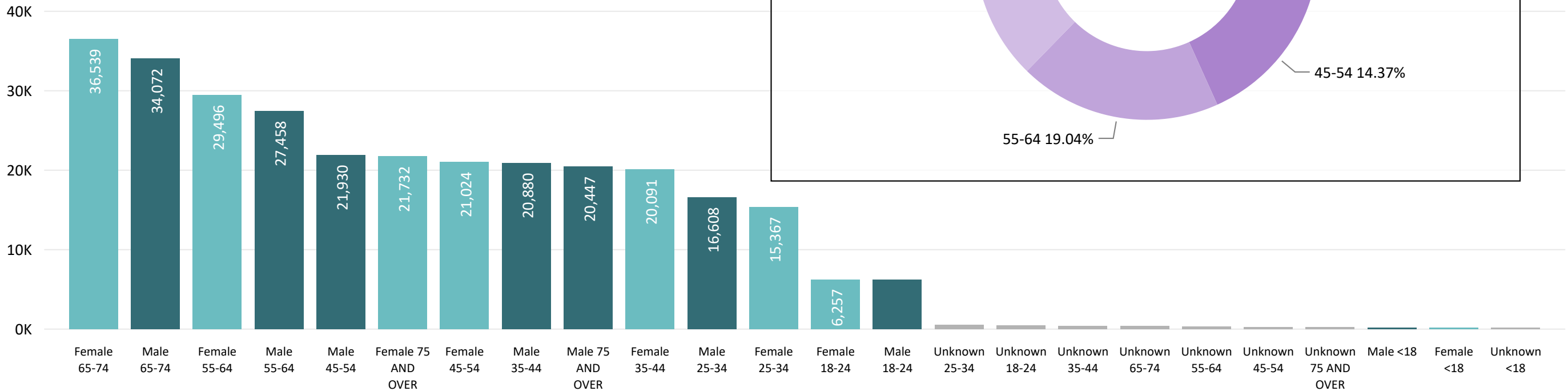
(as of October 14, 2020)

## 300,795

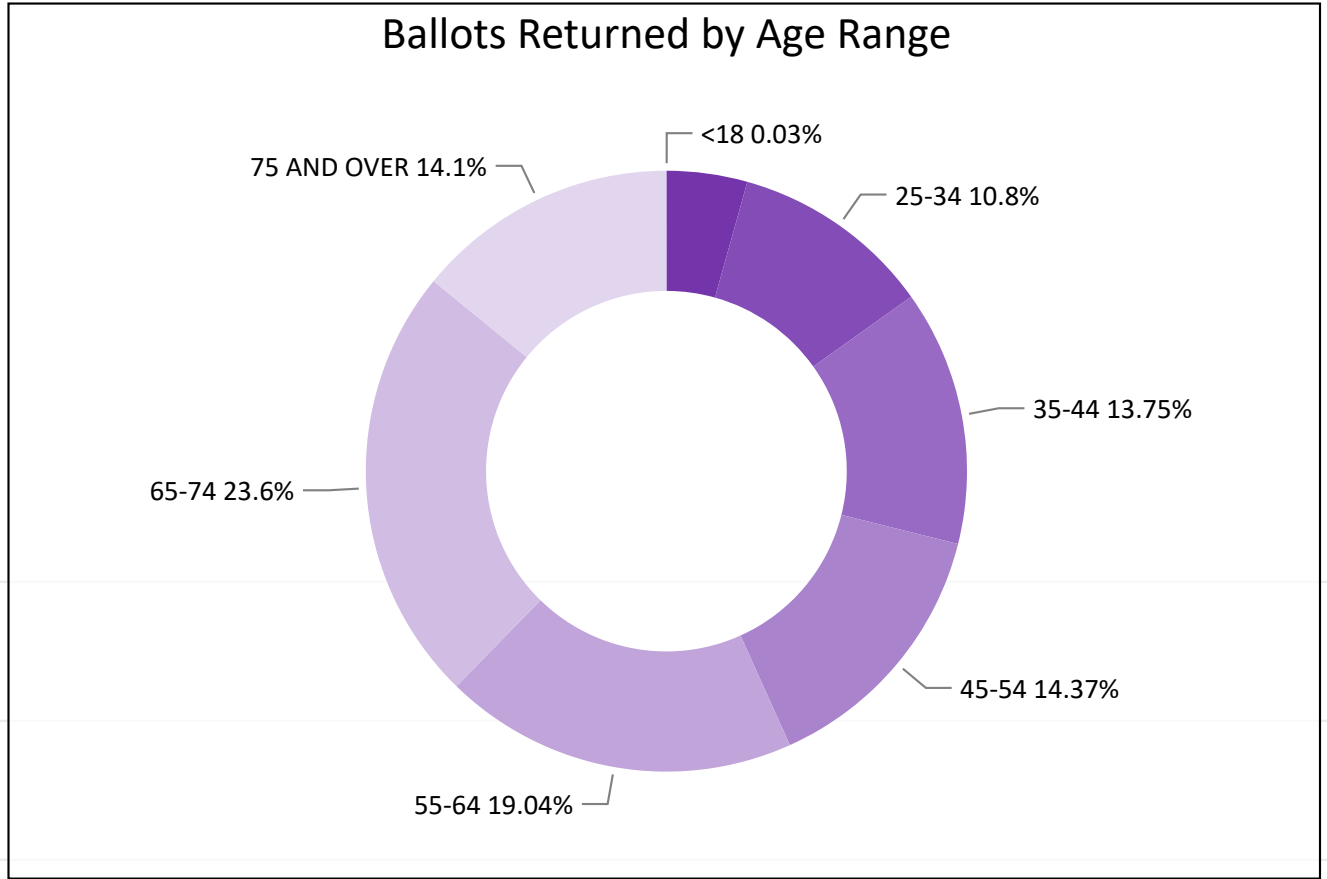
**October 15, 2020**

20 Days Out from Election Day

Ballots Returned by Gender/Age Range



Ballots Returned by Age Range



# Total Ballots Returned

(as of October 14, 2020)

## 300,795

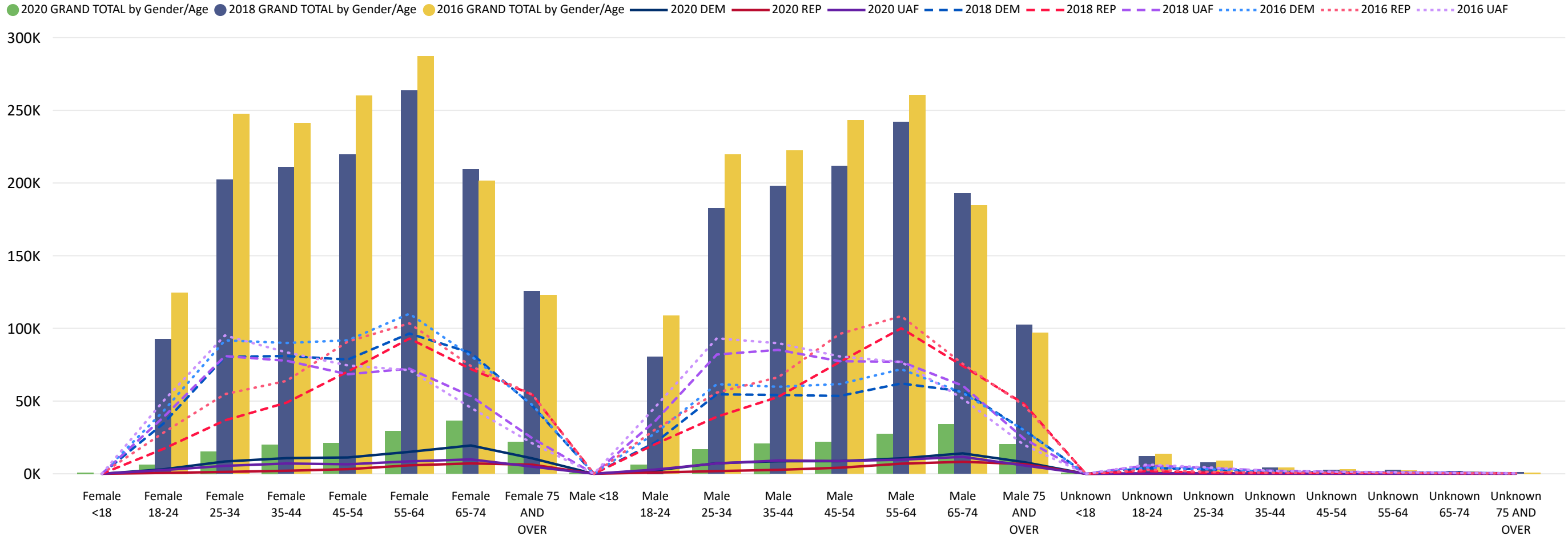
**October 15, 2020**

20 Days Out from Election Day

**2020 General Election** Ballot Return Reporting:  
Comparison of 2020, 2018, & 2016 by Gender and Age  
& Major Party

Chart reflects current totals for 2020  
and final totals from 2018 & 2016

Comparison of Ballots Returned by Gender/Age Range & Major Party 2020, 2018, & 2016



# Total Ballots Returned

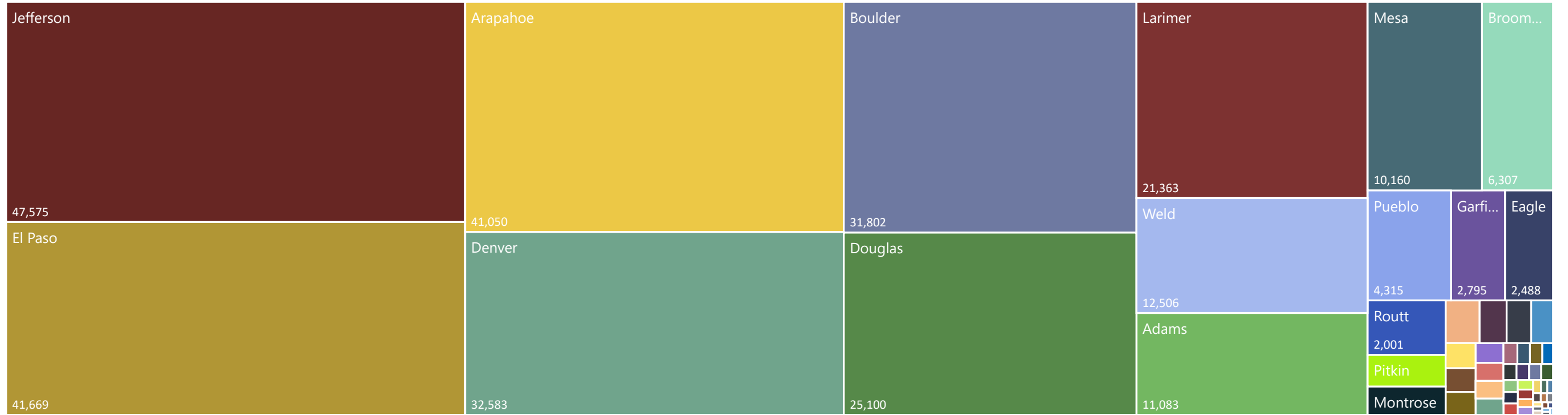
(as of October 14, 2020)

October 15, 2020

2020 General Election Ballot Return Reporting: by County

300,795

20 Days Out from Election Day



11,083	14	41,050	77	13	261	31,802	6,307	81	92
Adams	Alamosa	Arapahoe	Archuleta	Baca	Bent	Boulder	Broomfield	Chaffee	Cheyenne
49	0	236	9	56	683	32,583	6	25,100	2,488
Clear Creek	Conejos	Costilla	Crowley	Custer	Delta	Denver	Dolores	Douglas	Eagle
41,669	69	36	2,795	27	214	89	77	0	122
El Paso	Elbert	Fremont	Garfield	Gilpin	Grand	Gunnison	Hinsdale	Huerfano	Jackson
47,575	123	95	335	39	21,363	322	6	98	10,160
Jefferson	Kiowa	Kit Carson	La Plata	Lake	Larimer	Las Animas	Lincoln	Logan	Mesa
0	17	543	1,040	33	105	494	56	0	1,162
Mineral	Moffat	Montezuma	Montrose	Morgan	Otero	Ouray	Park	Phillips	Pitkin
11	4,315	353	137	2,001	18	0	438	18	231
Prowers	Pueblo	Rio Blanco	Rio Grande	Routt	Saguache	San Juan	San Miguel	Sedgwick	Summit
69	26	12,506	18						
Teller	Washington	Weld	Yuma						